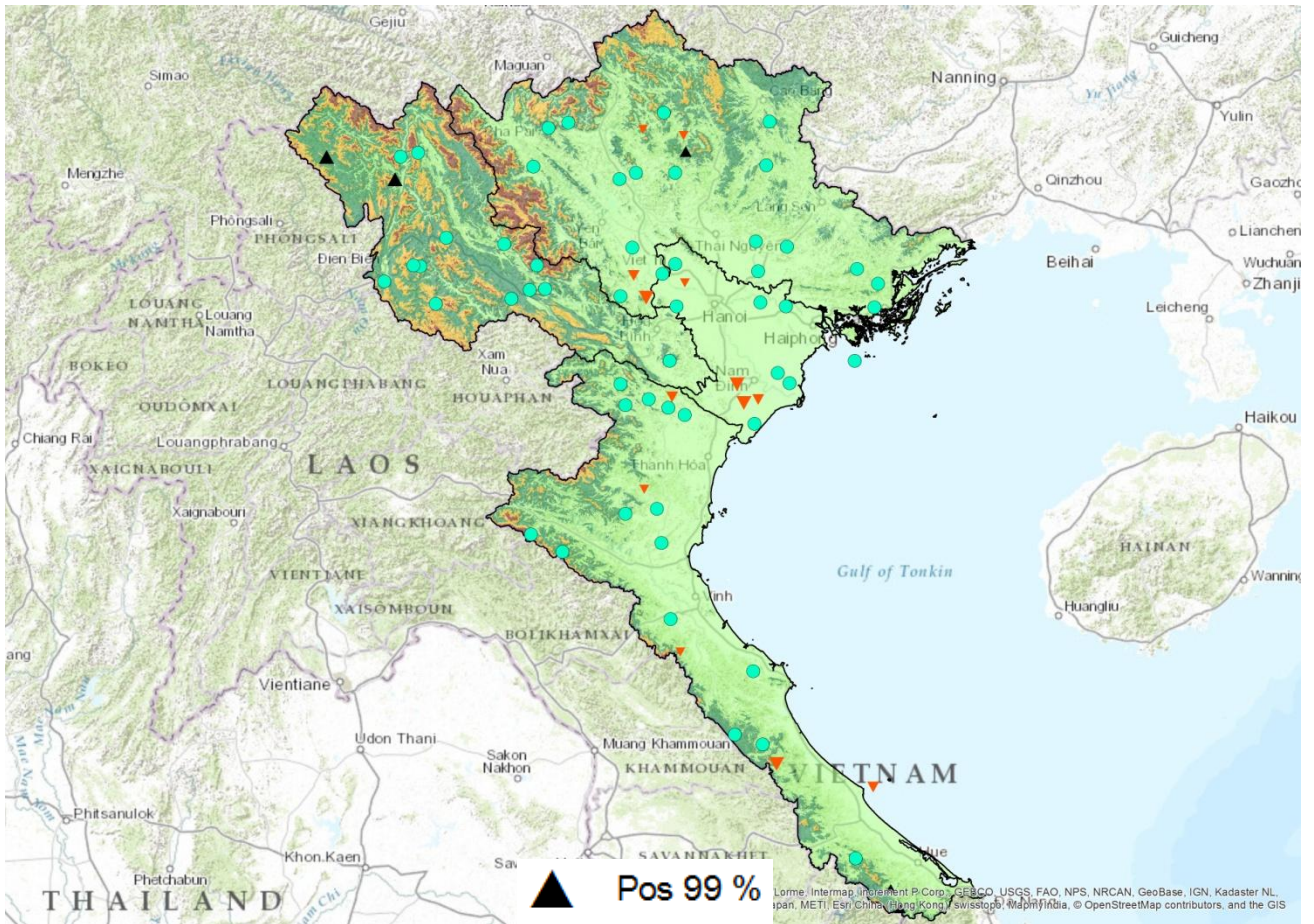
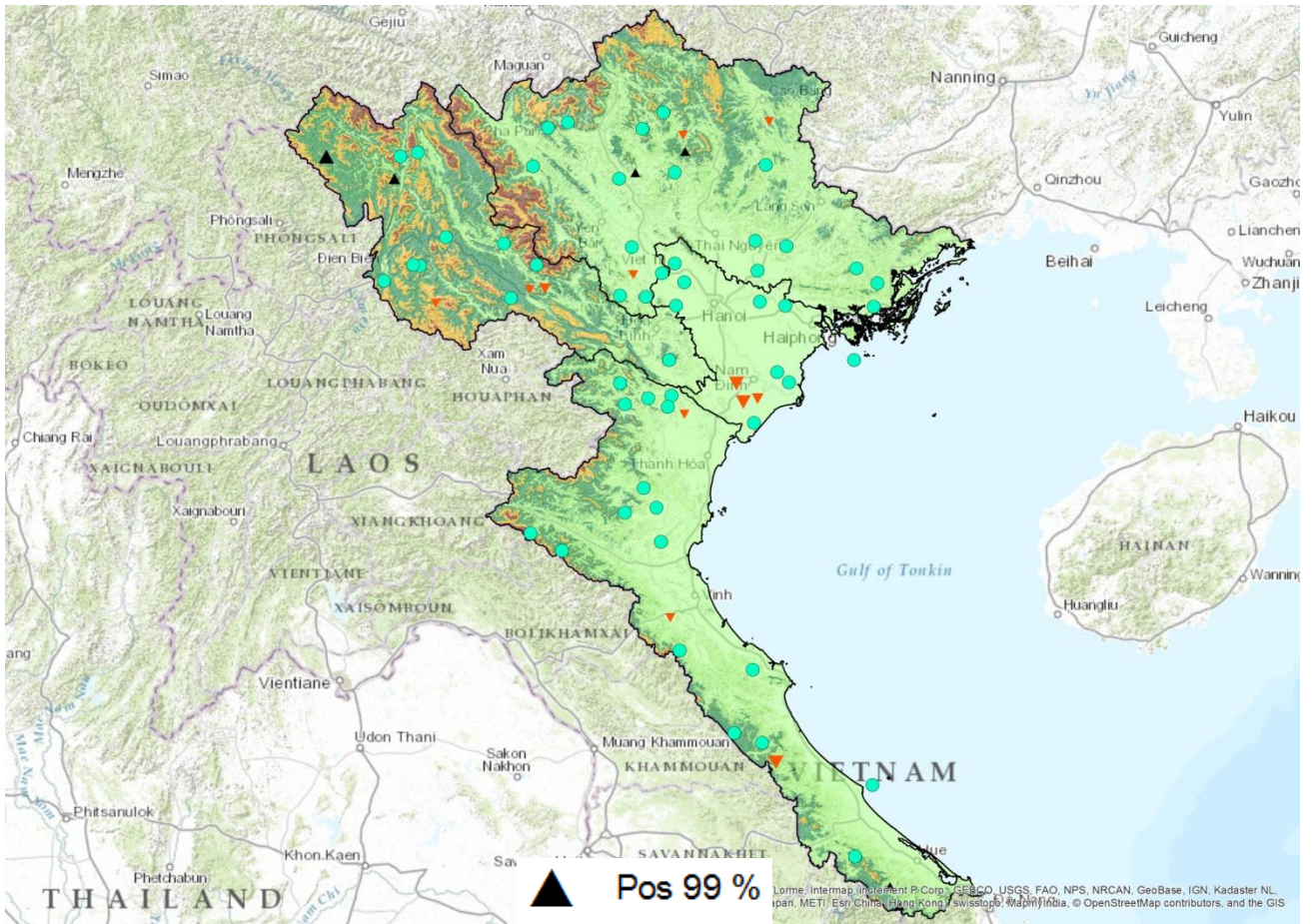


The results of the Mann-Kendall Trend-Test at rain season for Northern Vietnam weather stations.
Five ETCCDI-Indices

R95p

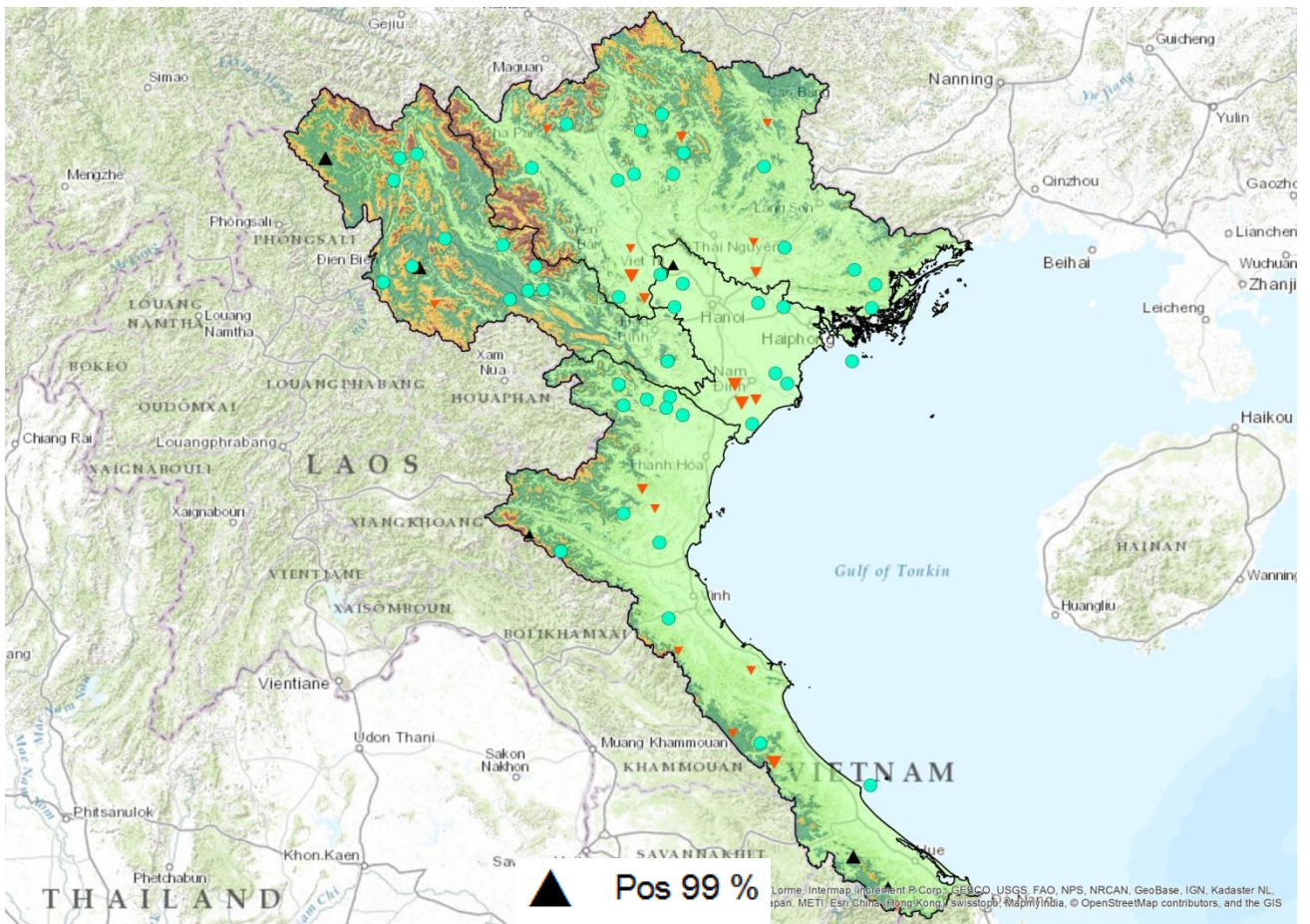


R99p



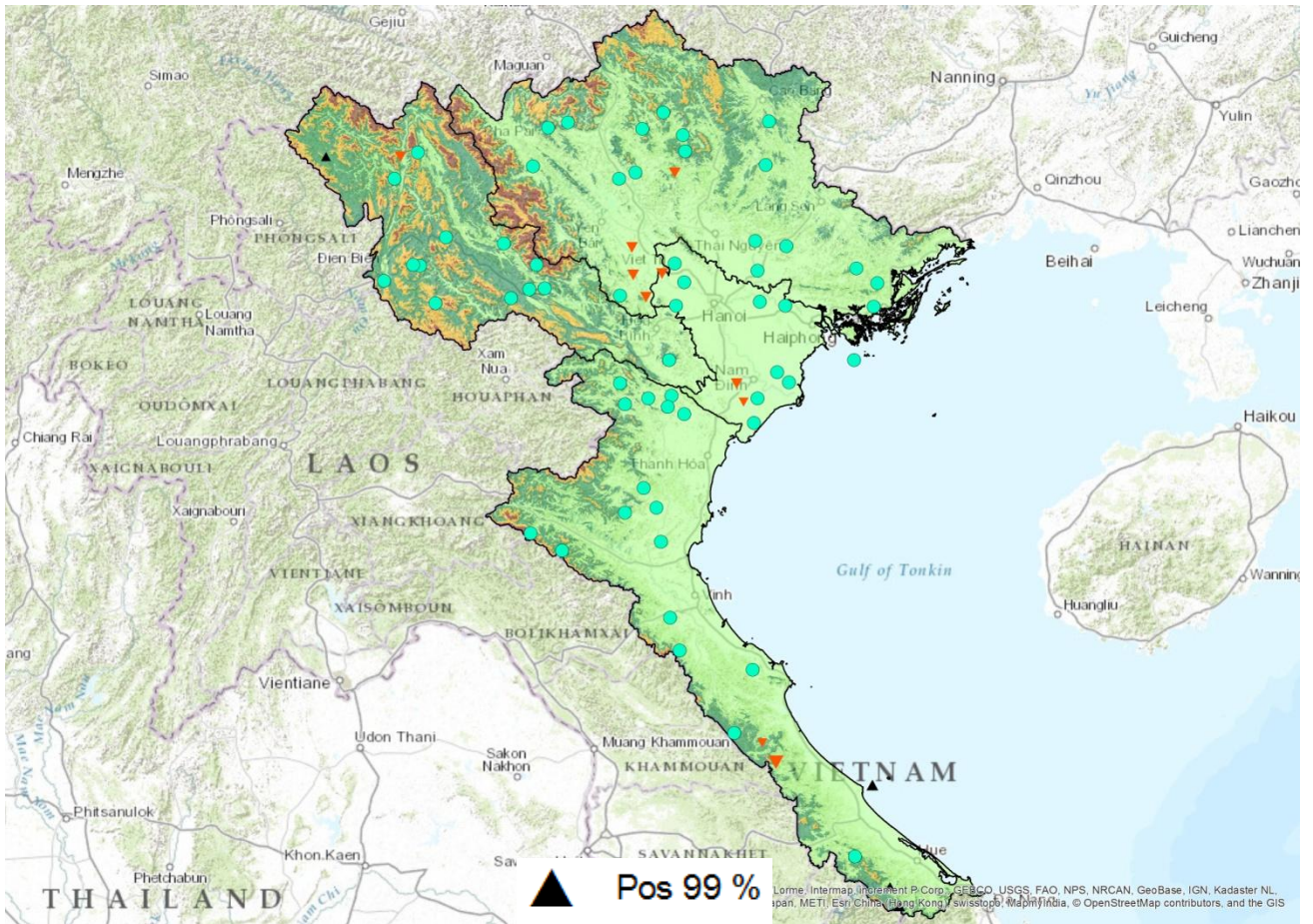
- ▲ Pos 99 %
- ▲ Pos 95 %
- ▲ Pos 90 %
- No Trend
- ▼ Neg 90 %
- ▼ Neg 95 %
- ▼ Neg 99 %

SDII



Lorrie / Intermap, Intermap P. Corp., ESRI, USGS, FAO, NPS, NRCAN, GeoBase, IGN, Kadaster NL, Japan, METI, Esri, China, Hong Kong, Swisstopo, MapmyIndia, © OpenStreetMap contributors, and the GIS

PRCPTOT



- ▲ Pos 99 %
- ▲ Pos 95 %
- ▲ Pos 90 %
- No Trend
- ▼ Neg 90 %
- ▼ Neg 95 %
- ▼ Neg 99 %

Lorrie / Intermap, Intermap P. Corp., ESRI, USGS, FAO, NPS, NRCAN, GeoBase, IGN, Kadaster NL, Japan, METI, Esri, China, Hong Kong, Swisstopo, MapmyIndia, © OpenStreetMap contributors, and the GIS

R50mm

